



SonicWALL Aventail SSL VPN Series

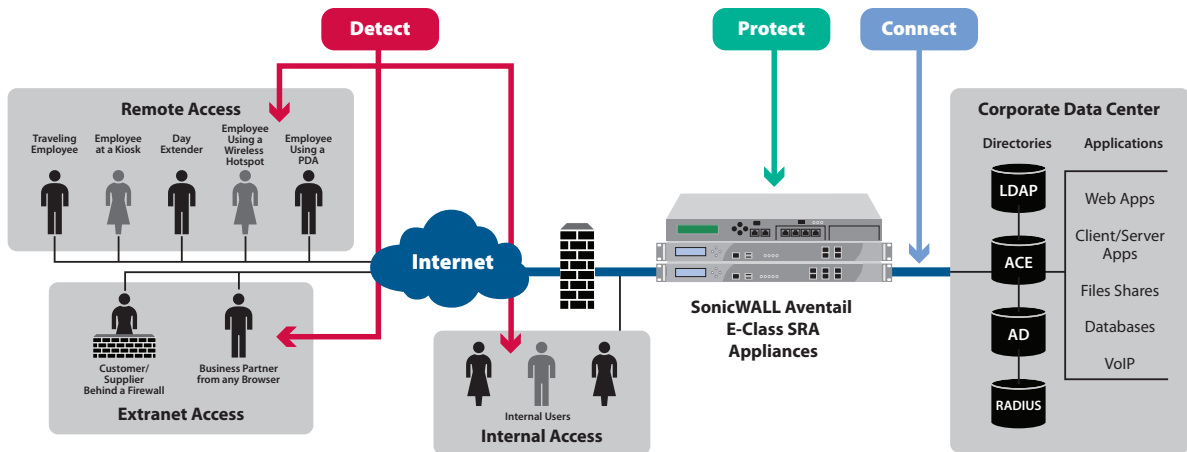
업계 선구자! SSL VPN 업계 최초로 상용화! (1997년)

이미 다양한 인증 및 수상을 통해 입증된 제품

세계 2,000개 이상의 글로벌 고객 보유

쉽고, 빠르고, 강력한 최고의 SSL VPN

SSL VPNs can...



Detect 엔드포인트 단말에서 실행되는것이 무엇인지 확인

→ **End Point Control™ (EPC™)** :
엔드포인트의 식별과 보안 상태 탐지

Protect 사용자 식별과 디바이스 무결성을 기반으로
어플리케이션에 대한 세밀한 접근 제어 제공

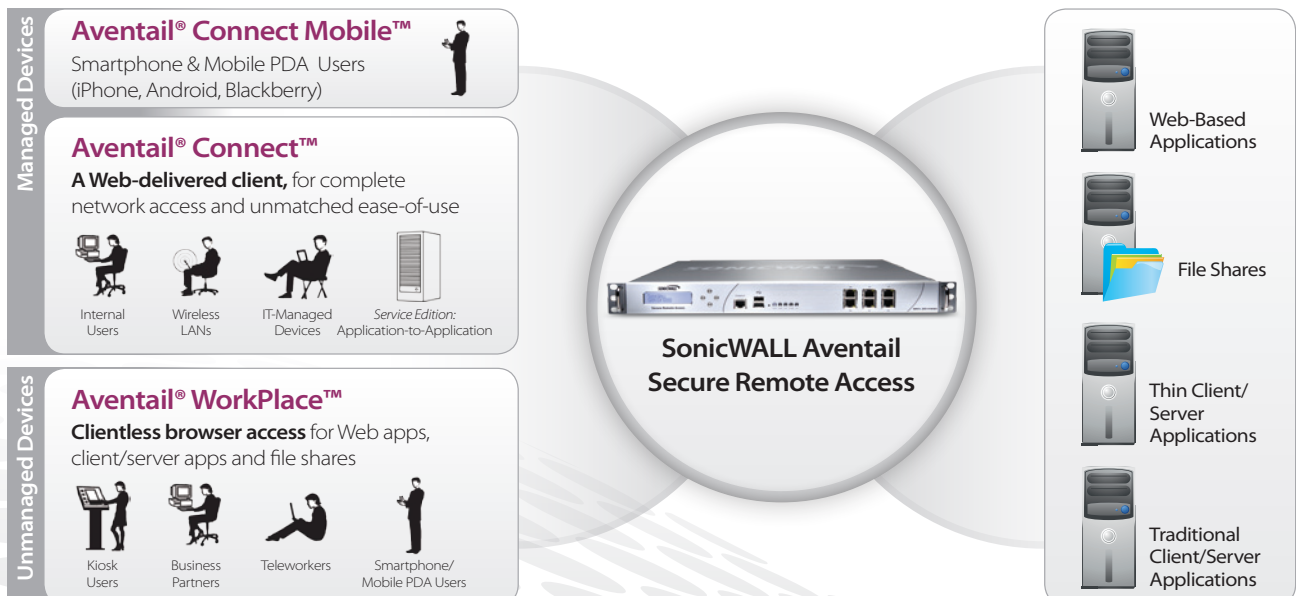
→ **Unified Policy™** :
사용자 권한별 어플리케이션 접근뿐만 아니라 디바이스 접근 제어를 위한 강력한 엔진

Connect 사용자 보안성과 어플리케이션 접속 용이성

→ **Smart Access™ and Smart Tunneling™** :
모든 네트워크 리소스들의 사용자 보안과 접근 용이성을 제공하기 위한 전송 메커니즘

One Secure Gateway for Secure Remote Access Needs

아벤테일은 모든 디바이스, 어플리케이션, 사용자의 사용편이성, 보안성, 생산력을 위해 집중화된 관리를 하기 위한 단일 원격 접속 컨트롤을 제공





EX9000



EX7000



EX6000

Specifications

Feature	EX6000	EX7000	EX9000
Performance			
Concurrent users	Support for up to 250 concurrent users per node or HA pair	Support for up to 2,000 concurrent users per load-balanced node or HA pair	Support for up to 20,000 concurrent users per node or HA pair
Hardware			
Form factor	U rack-mount	U rack-mount	2U rack-mount
Dimensions	17.0 x 16.75 x 1.75 in (43.18 x 42.54 x 4.44 cm)	17.0 x 16.75 x 1.75 in (43.18 x 42.54 x 4.44 cm)	27.0 x 18.9 x 3.4 in (68.6 x 48.2 x 8.8 cm)
Processor	Intel Celeron 2.0 GHz 1 GB DDR533	Intel Core2 Duo 2.1 GHz 2 GB DDR533	Intel Quad Xeon 2.46 GHz
Network	6 Stacked PCIe GB	6 Stacked PCIe GB	(4) 10GbE sfp, (8) 1 GbE
Key Features			
Security			
Encryption	Configurable session length, Ciphers: DES, 3DES, RC4, AES, Hashes: MD5, SHA		
Authentication methods	Server-side digital certificates, Username/password, Client-side digital certificates RSA SecurID and other one-time password tokens, Dual/stacked authentication		
Directories	Microsoft Active Directory, LDAP (Active Directory, Sun iPlanet, etc.), RADIUS; Dynamic groups based on LDAP/AD queries, Certificate revocation lists (CRL)		
Password management	Notification of password expiration and password change from the SonicWALL Aventail WorkPlace portal		
Access control options	User and group, Source IP and network, Destination network, Service/Port (OnDemand and Connect only) Define resources by destination URL, host name or IP address, IP range, subnet and domain, Day, date, time and range, Browser encryption key length, Policy Zones (allows, denies and quarantines access and provides data protection based on end point security profile), File system access controls		
SonicWALL Aventail End Point Control™ (EPC™)	Detection of files, registry keys, running processes and Device Watermarks; Advanced Interrogator: (simplified granular end point detection, including detailed configuration information on over 100 anti-virus, anti-spyware and personal firewall solutions, including McAfee, Symantec, Sophos and Trend) Data Protection: Cache Control (data protection), Secure Desktop (advanced data protection); Includes jailbreak or root detection for iOS and Android devices		
Access and Application Support			
SonicWALL Aventail WorkPlace™ Access (browser-based access)	Clientless access to web-based resources, web file access; SMB/ CIFS, DFS, Personal Bookmarks, Multiple optimized WorkPlace portals for different user groups, Access to any TCP- or UDP-based application via the WorkPlace portal (leveraging OnDemand Tunnel agent)		
SonicWALL Aventail WorkPlace Mobile Access	Customized WorkPlace support for smartphone and tablet browsers		
SonicWALL Aventail Connect™ Access	Pre-installed agent provides access to any TCP- or UDP-based application (Windows, Macintosh and Linux support)		
SonicWALL Aventail Connect Mobile™	Lightweight agent that provides access to both web and client/server applications for Windows Mobile devices		
Management and Administration			
Management	SonicWALL Aventail Management Console (AMC): centralized web-based management for all access options, End Point Control configuration, access control policies and WorkPlace Portal configuration, easy policy replication across multiple appliances and locations, role-based administration		
Auditing	SonicWALL Aventail Advanced Reporting™, RADIUS auditing and accounting integration		
Monitoring and Logging	User connection monitoring, event alarms, View logs and performance information via the SonicWALL Aventail Management Console, SNMP integration including SonicWALL Aventail-specific SNMP MIB, Support for central SYSLOG server		
High Availability			
High Availability	Support for high-availability 2-node clusters with built-in load-balancing and stateful authentication failover		
Clustering	-	-	Support for load-balanced arrays using standard external loadbalancers
Mobile OS Support	Microsoft Windows Mobile 5.0, 6.0, 6.1 / Symbian, Blackberry, Android / iPod Touch, iPhone, and iPhone 3G/4		

* Based on installing DC conversion kit in the field

적용사례



일용직 계약직



공항 키오스크
공용PC 환경



출장자
파견근무자



SaaS, Web 2.0
Real-Time Apps



재택근무



비즈니스 파트너사
외부 사용자



Wireless LAN
사용자



PDA & 스마트폰
사용자



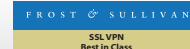
VOIP 사용자



가트너 SSL VPN Magic Quadrant 6회 수상



Forrester: SSL VPN 최고 제품 수상



원격접속 연결을 위한 최고의 SSL VPN 선정

